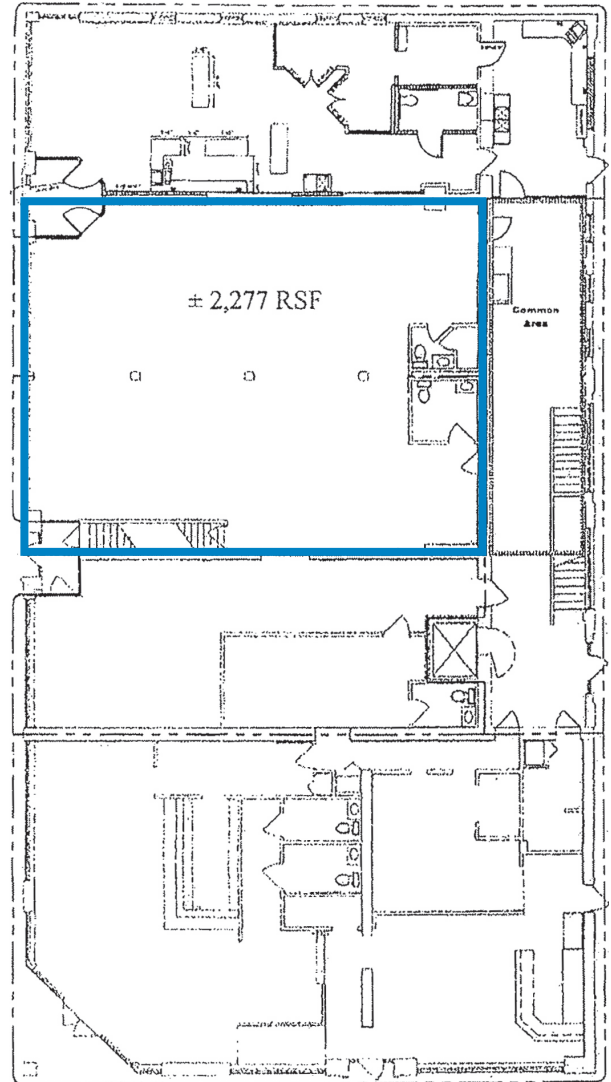


## FOR LEASE

### 3016 S Grand Blvd St. Louis, MO 63118



- Located on South Grand at Arsenal
- 2,277+/- Inline Retail/Restaurant Space
- Traffic Counts of 27,715 VPD
- Large On-Site Parking
- Basement Storage
- Join Botanicals Design Studio and T-Mobile

---

**Offered at:**  
**\$17.00 NNN**

---

**For more information contact:**

**Dianne Graham**  
Direct: 314-336-1970  
Cell: 314-757-7252  
[graham@realtyexchangeweb.com](mailto:graham@realtyexchangeweb.com)

Information contained herein has been obtained from the owner of the property or other sources. The Brokers do not guarantee the accuracy of this information. Sellers and Brokers make no representation as to the environmental or other conditions of the property and recommend that Purchaser(s) investigate fully.